

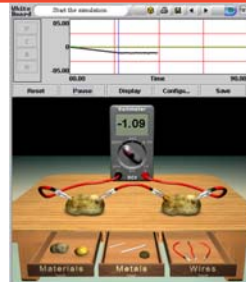
**CORD Communications** is excited to offer five exciting new software modules designed to immerse students in a dynamic learning environment that places them in control of their own success. Developed by The Athena Group, the PSI SIM system provides structure through an intuitive, easy to learn interface, which unlike typical web environments, reduces the cognitive demands on the learner. Each module allows students to investigate a science topic of interest independently or under the direction of the teacher.



Check out:  
**learningincontext.com**  
for an online demo!

### The Potato Experiment

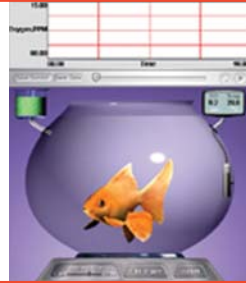
Can a potato be used as a battery? Students create an electrochemical cell using a potato, wires, and two dissimilar metals to produce a voltage reading by a voltmeter.



Use with: *Physics in Context, Principles of Technology* (Voltage in Electrical Systems)

### The Fish Experiment

Students experience a simulation consisting of a goldfish in an aquarium to study the respiration rate of a fish. Students adjust the temperature and presence of algae, while measuring the dissolved oxygen concentration and respiration rate of a goldfish.



Use with: *CORD Biology* (The Respiratory System), *Applications in Biology/Chemistry* (Air and Other Gases)

### The Codebreaker Experiment

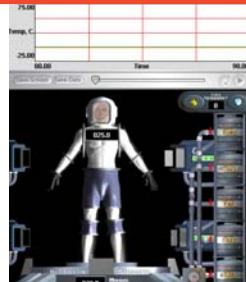
In the Codebreaker experiment, students use a simulation to study how computers and cultures store and display coded information. They conduct this investigation in the context of a code breaking activity.



Use with: *Physics in Context, Principles of Technology* (Optical Systems)

### The Insulation Experiment

Students use a simulation to investigate how heat moves through different substances commonly found in the human body. The students measure the transfer of heat through fats, bones, muscles, skin, and water to determine which material provides organisms facing cold temperatures the best insulating layer to retain body heat.



Use with: *Physics in Context, Principles of Technology* (Resistance in Thermal Systems)

### The Water Flea Experiment

In the water flea experiment, students use a virtual microscope to investigate the effects of drugs. Dosage, gender, and recent meal status are variables in the experiment. Students count the heart rate of a water flea while adding a variety of drugs and dosages to learn about the effects of stimulants and depressants.



Use with: *Applications in Biology/Chemistry* (How Do Drugs Affect Our Heart Rate)

# To Order:

On the Web:

[www.cordcommunications.com](http://www.cordcommunications.com)

Phone:

(800) 231-3015 ext. 428  
(credit card only)

Fax:

(254) 776-3906



P.O. Box 21206  
Waco, TX 76702-1206

Enter Quantities Here

	Unit Price	Water Flea	Electric Potato	Insulation	Codebreaker	Fish Respirator	Total Price
Single CD	\$30						
LabPacks (can mix and match)							
LabPack of 5	\$135						
LabPack of 10	\$240						
LabPack of 20	\$420						
*Site License Pricing (per location)	Per Title						
Up to 250 students	\$250						
251-500 students	\$400						
501-750 students	\$540						
751-1000 students	\$680						
1001-1500 students	\$960						
2501-2500 students	\$1500						
							<b>Subtotal</b>
							<b>10% shipping and handling</b> (Estimate only. \$6.00 minimum)
							<b>TOTAL</b>

District Pricing is available. Please call for details.

(site licenses for additional titles purchased at the same time receive a 10% discount on each)

\*Site licenses include one (1) set of documentation and one (1) set of install CD-ROM's, and are based on the total number of students at a single school location. Licensees are allowed to install or network the software on each computer this location only.

## Bill To:

Name \_\_\_\_\_  
 Position \_\_\_\_\_  
 School/Organization \_\_\_\_\_  
 Address \_\_\_\_\_  
 City/State/Zip \_\_\_\_\_  
 Telephone (     ) \_\_\_\_\_  
 Fax (     ) \_\_\_\_\_

## Ship To:

Name \_\_\_\_\_  
 Position \_\_\_\_\_  
 School/Organization \_\_\_\_\_  
 \*Address \_\_\_\_\_  
 City/State/Zip \_\_\_\_\_  
 Telephone (     ) \_\_\_\_\_  
 \*Please include street address only.

## Method of Payment

Check enclosed      P.O.# (by fax or mail)      VISA      MasterCard      Discover      AMEX

Acct. No. \_\_\_\_\_

Exp. Date: \_\_\_\_\_

Signature \_\_\_\_\_